



GAT MONTHLY MEMBERSHIP PROGRESS REPORT

Results as of: 1/31/2023

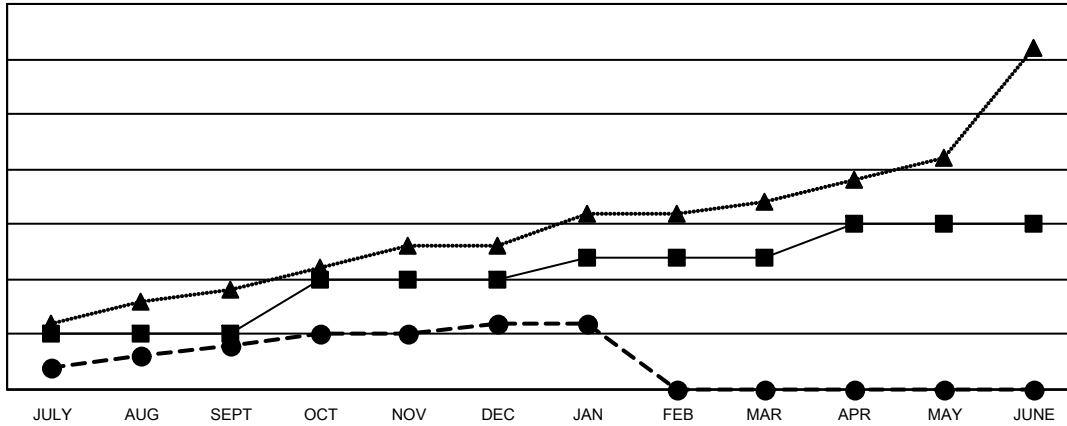
Multiple District 3231

LOCATION: INDIA

| Clubs | | | |
|-----------------------|---------------|-----------|---------------|
| RESULTS FOR 2022-2023 | | | |
| QUARTER | NEW CLUB GOAL | NEW CLUBS | DROPPED CLUBS |
| JULY/AUG/SEPT | 5 | 4 | 1 |
| OCT/NOV/DEC | 5 | 2 | 6 |
| JAN/FEB/MAR | 2 | 0 | 2 |
| APR/MAY/JUNE | 3 | 0 | 0 |

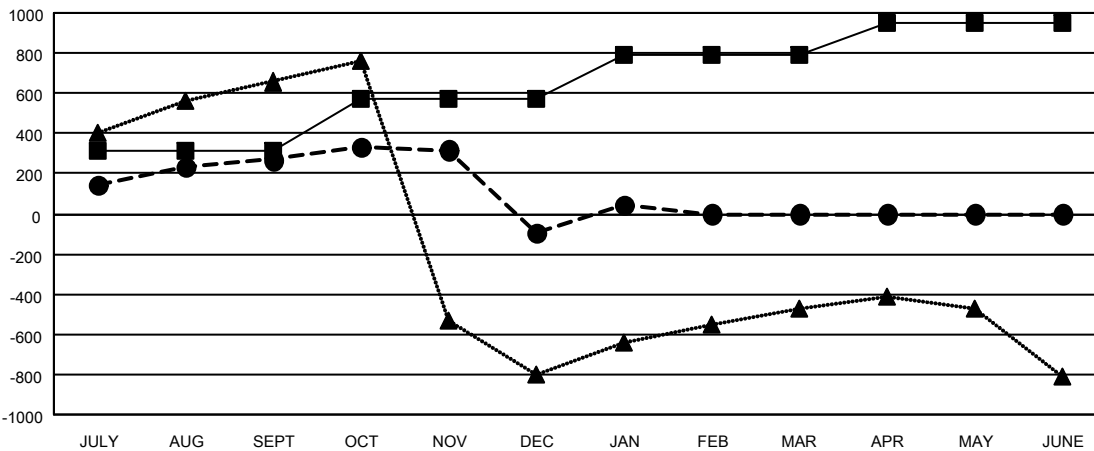
| Members | | | |
|-----------------------|------------------------|----------------------|--|
| RESULTS FOR 2022-2023 | | | |
| QUARTER | MEMBER GROWTH NET GOAL | MEMBER GROWTH ACTUAL | DROPPED MEMBERS ACTUAL (including transfers) |
| JULY/AUG/SEPT | 315 | 519 | 214 |
| OCT/NOV/DEC | 260 | 199 | 533 |
| JAN/FEB/MAR | 215 | 272 | 90 |
| APR/MAY/JUNE | 160 | 0 | 0 |

GOALS AND ACTUAL NEW CLUBS CUMULATIVE



- CURRENT YEAR GOALS FOR NEW CLUBS
- CURRENT YEAR ACTUAL NEW CLUBS
- ▲- LAST YEAR ACTUAL NEW CLUBS

GOALS AND ACTUAL MEMBERS CUMULATIVE



- MEMBER GROWTH NET GOAL
- MEMBER GROWTH ACTUAL
- ▲- LAST YEAR MEMBERSHIP ACTUAL

| | | |
|------------------------|---|--|
| DROPPED CLUBS: 9 | 140 CLUBS OF 331 ADDED 1 OR MORE NEW MEMBERS | GENDER DISTRIBUTION |
| DROPPED MEMBERS | CLICK HERE FOR CUMULATIVE MEMBERSHIP DATA | MALE 6,652 (60.24%) |
| DECEASED 29 | | FEMALE 4,389 (39.75%) |
| CLUB CANCELLED 110 | | NON BINARY 0 (0.00%) |
| OTHER 698 | | PREFER NOT TO ANSWER 1 (0.01%) |
| TOTAL 837 | | TOTAL FAMILY UNIT MEMBERS 6,123 |
| | | FAMILY MEMBERS PAYING HALF DUES 3,316 |